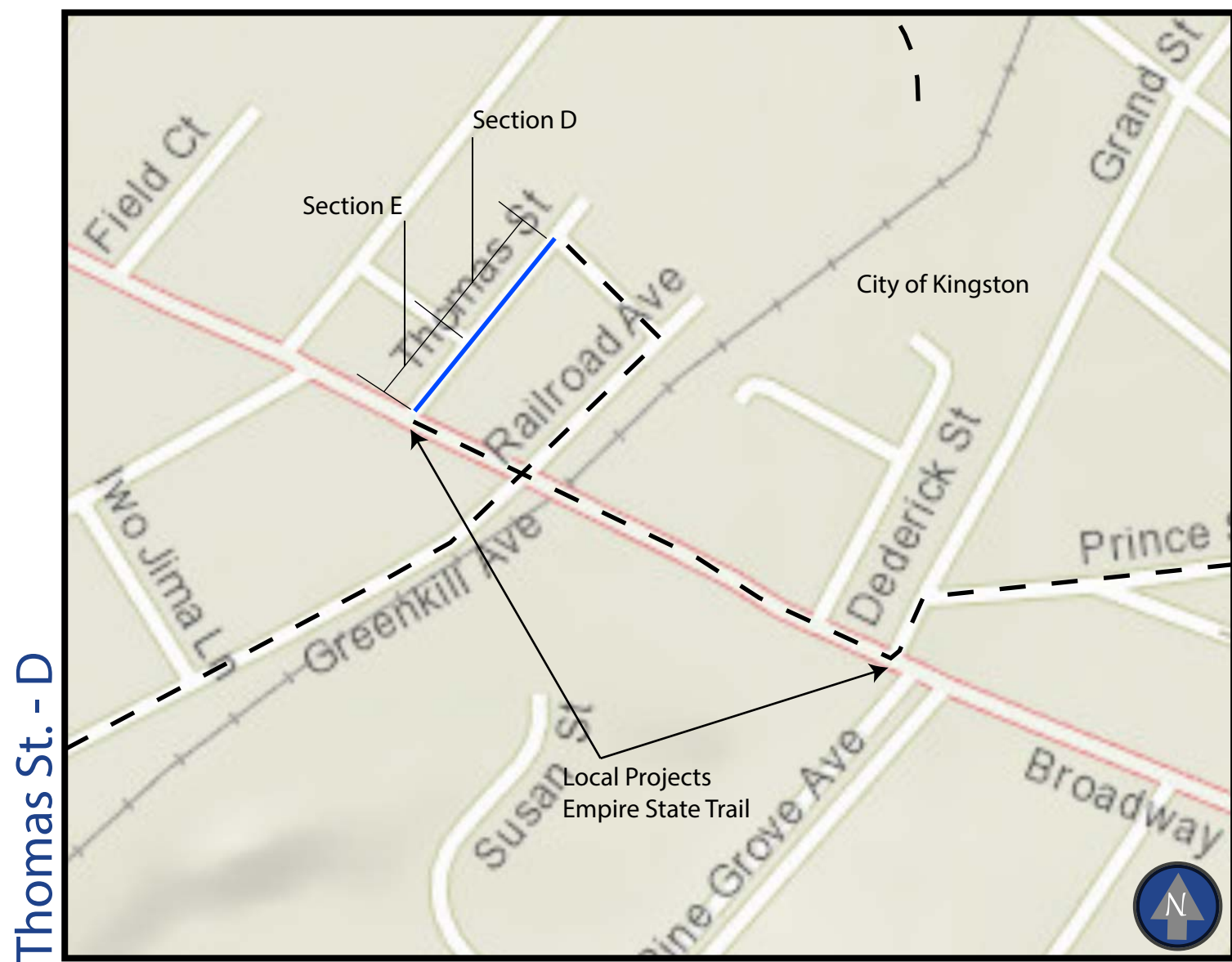


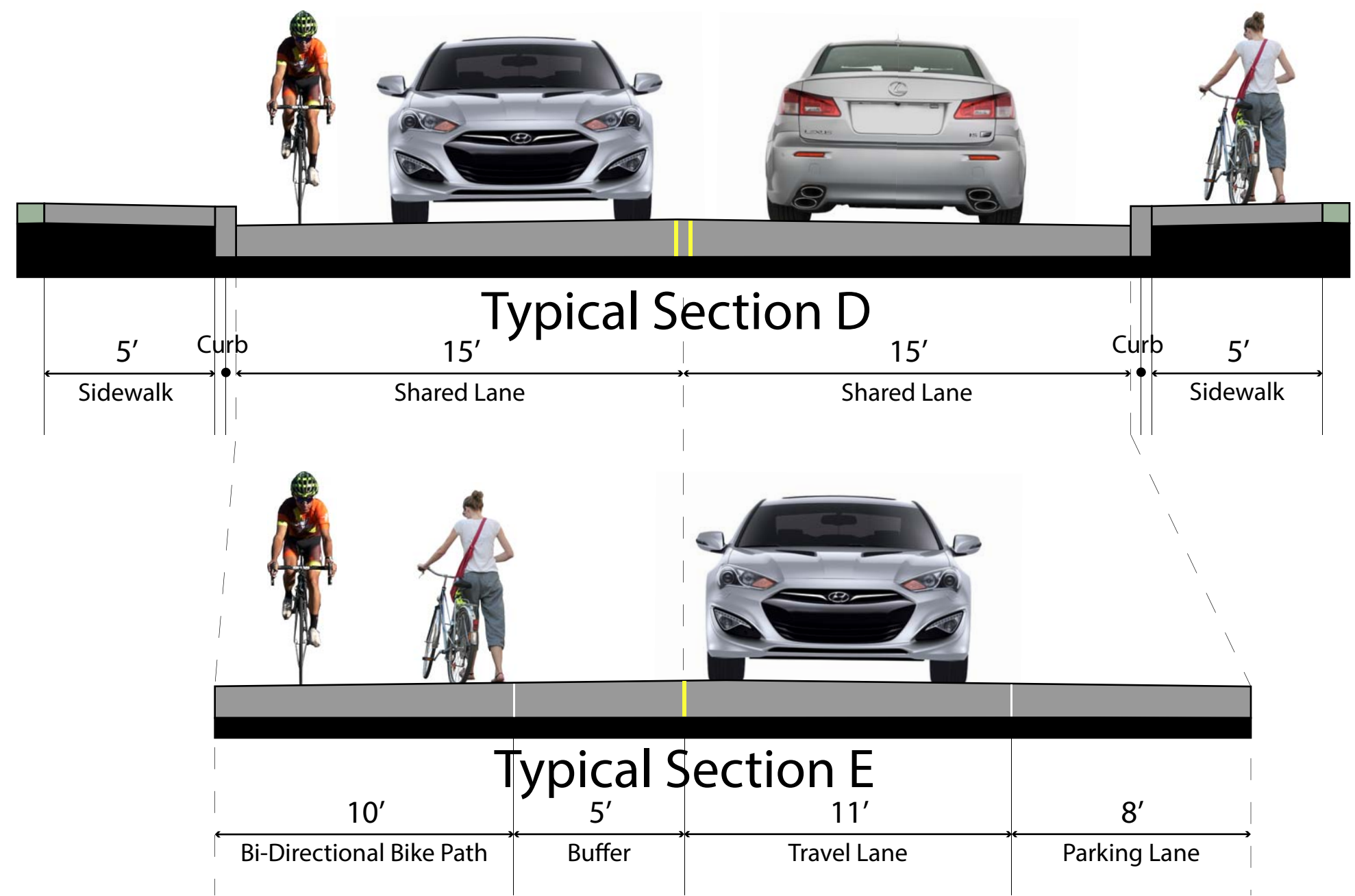
Empire State Trail:

8EST.04: Wallkill Valley Rail Trail to Kingston Point Rail Trail
 8EST.05: Kingston Point Rail Trail to NYS Route 32

Open House Typical Sections



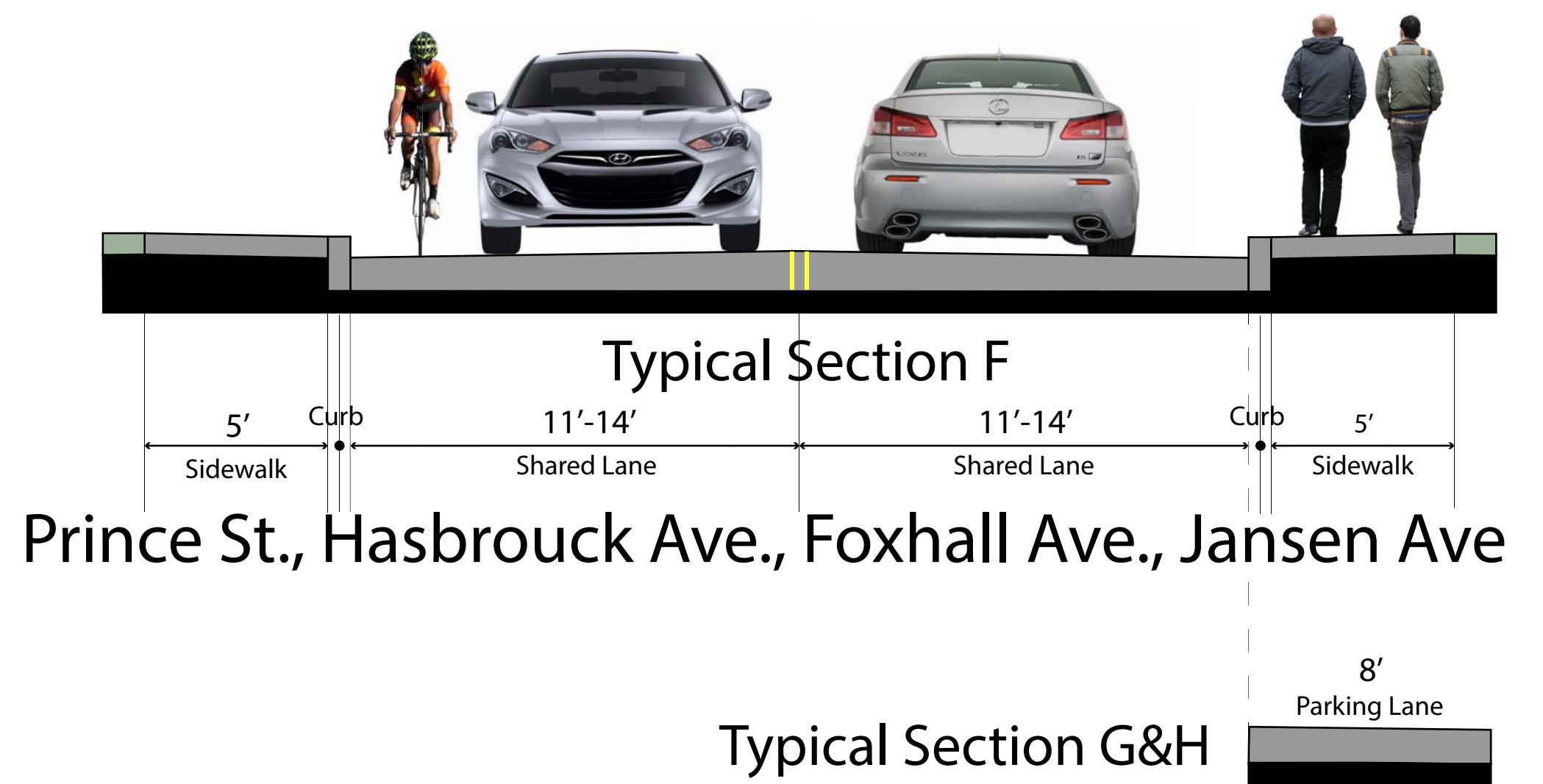
Thomas St. - D



Thomas St.

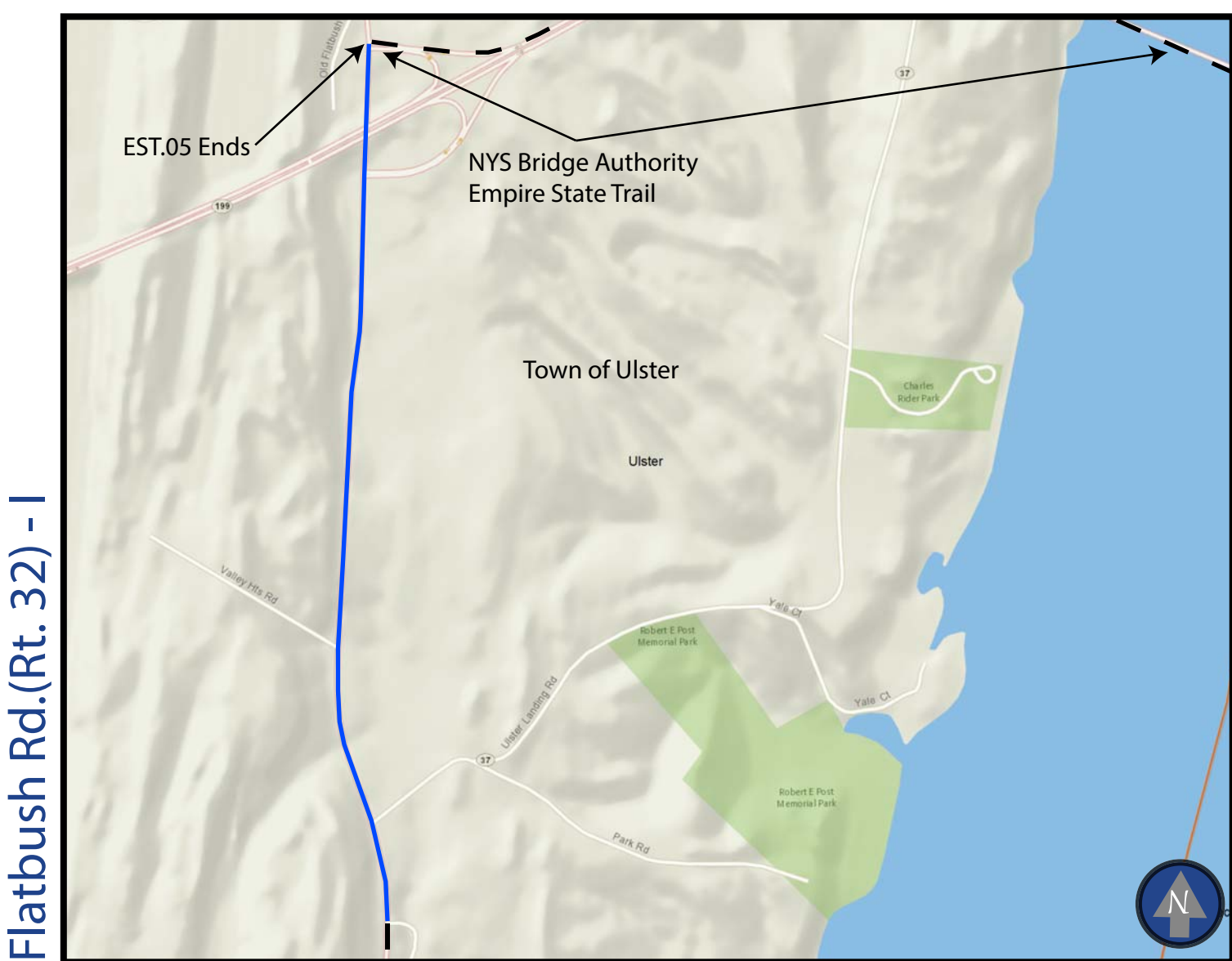


Sections F, G, H

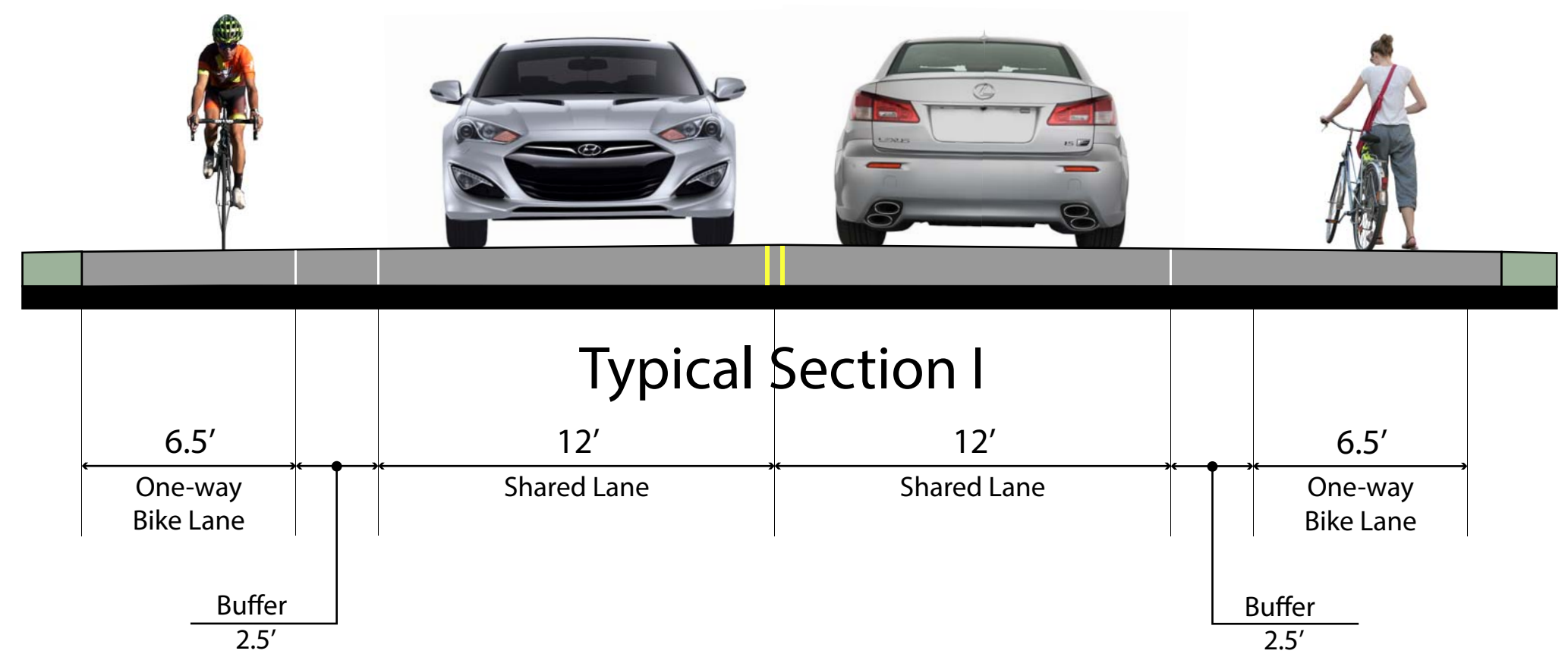


Prince St., Hasbrouck Ave., Foxhall Ave., Jansen Ave

East Strand St., North St., John St., Main St



Flatbush Rd. (Rt. 32) - I



Flatbush Rd. (Rt. 32)



Department of
Transportation