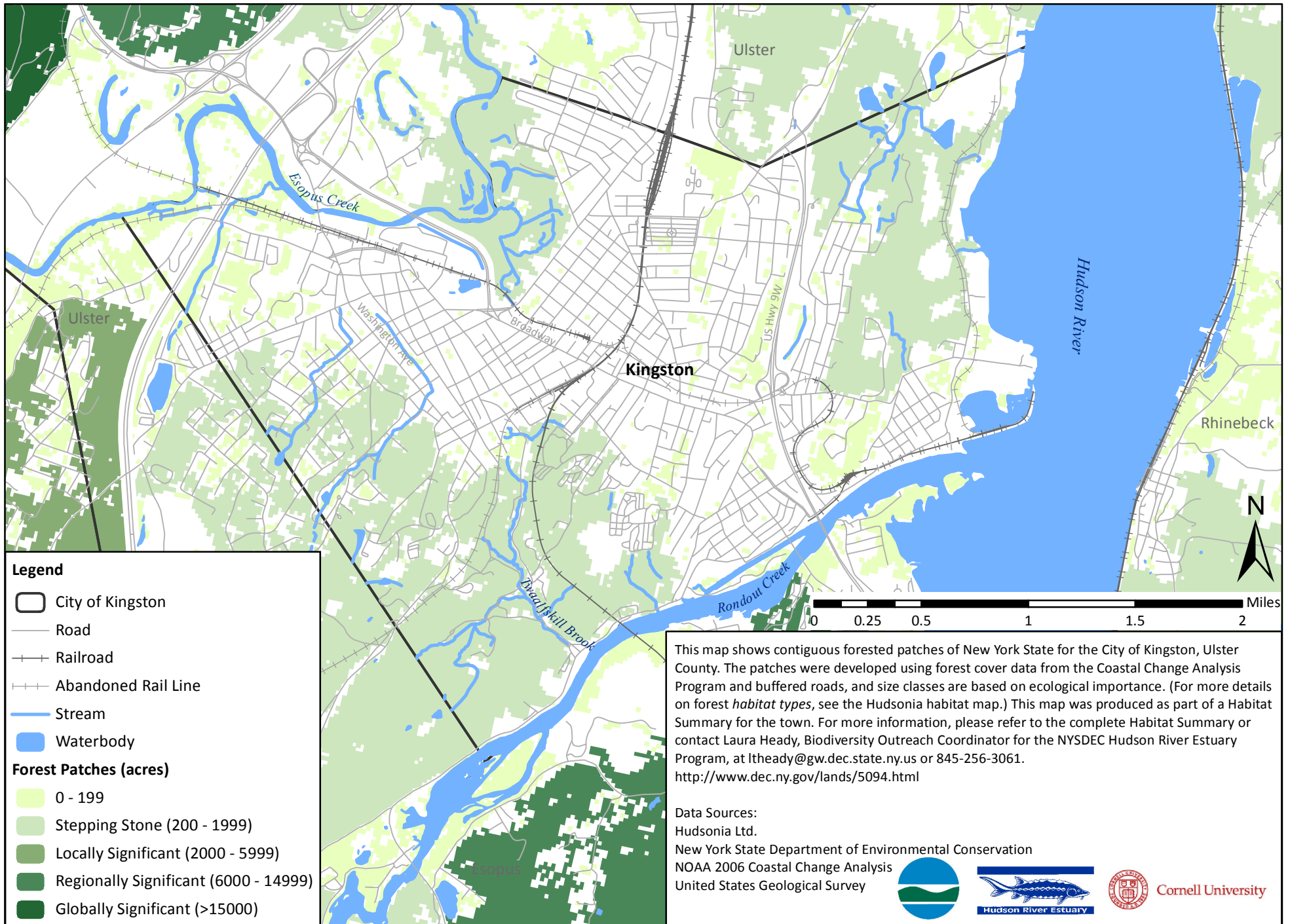


Figure 5: Forests in Kingston, NY



Legend

- City of Kingston
- Road
- Railroad
- Abandoned Rail Line
- Stream
- Waterbody

Forest Patches (acres)

- 0 - 199
- Stepping Stone (200 - 1999)
- Locally Significant (2000 - 5999)
- Regionally Significant (6000 - 14999)
- Globally Significant (>15000)

This map shows contiguous forested patches of New York State for the City of Kingston, Ulster County. The patches were developed using forest cover data from the Coastal Change Analysis Program and buffered roads, and size classes are based on ecological importance. (For more details on forest *habitat types*, see the Hudsonia habitat map.) This map was produced as part of a Habitat Summary for the town. For more information, please refer to the complete Habitat Summary or contact Laura Heady, Biodiversity Outreach Coordinator for the NYSDEC Hudson River Estuary Program, at ltheady@gw.dec.state.ny.us or 845-256-3061. <http://www.dec.ny.gov/lands/5094.html>

Data Sources:
 Hudsonia Ltd.
 New York State Department of Environmental Conservation
 NOAA 2006 Coastal Change Analysis
 United States Geological Survey

